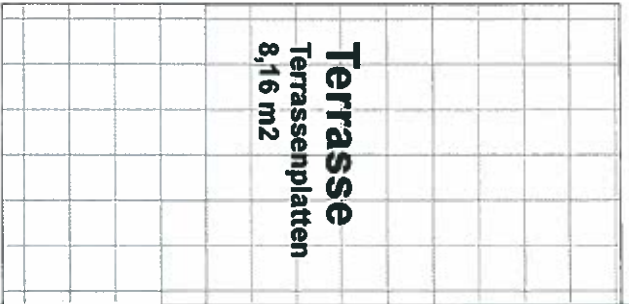
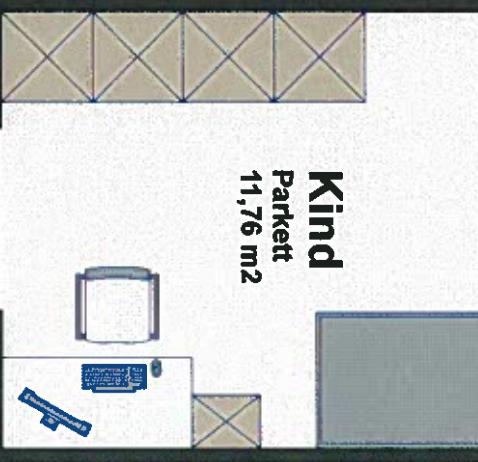
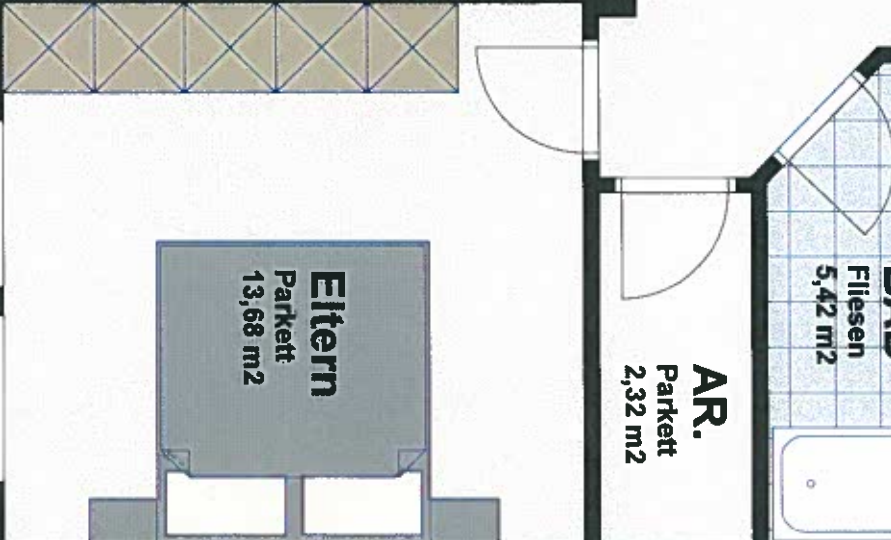
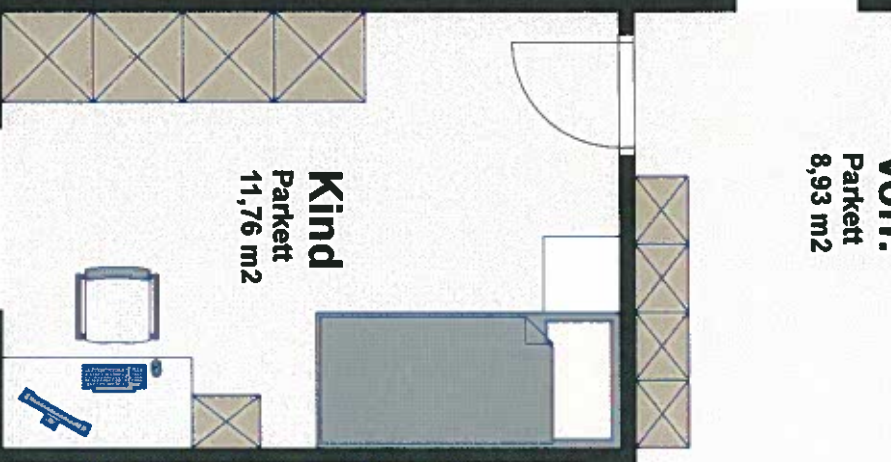
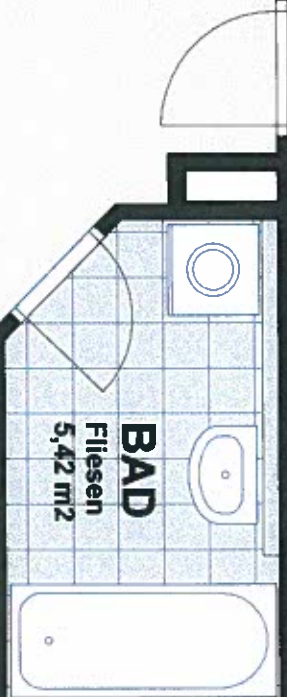
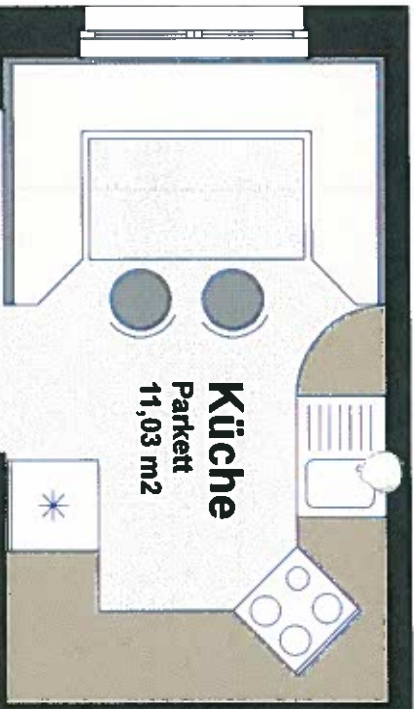
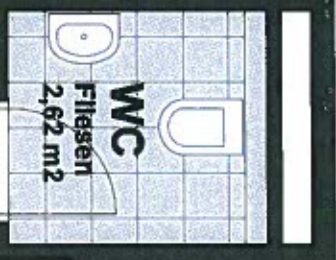


Top 1 = 82,00 m²
Haus 2 - ERDGESCHOSS

1



**HEIMAT
OSTERREICH**

**BAUWEISTER ING.
FRANZ PIFFERER**
BAUWEISTER-GENEBLICKER ARCHITECTURKONZERN
48100 WOLFGANG, LANGENMANNSTR. 5, TEL: 0043 357 27201, FAX: 0043 357 27202
WWW.PIFFERER.AT

1320	WÖHNLÄGE
HAUS 7+2	HÖHLUNGÖTZ
plan	Haus 2 - ERDGESCHOSS - TOP 1
maßst.	1:50
	vermaßt
	mit

© 2007 PIFFERER ARCHITECTURKONZERN